

# CB | 15

FURNITURE+

## CURATEDCOLLECTION

---

Interactive Card





**VECTOR**  
VE-007 Latte



**GALVESTON**  
GV-017 Desert



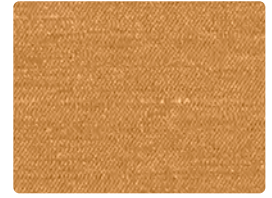
**MATKA**  
MT-020 Burnish



**ENGRAVE**  
634-027 Canyon



**ODESSA**  
624-002 Marigold



**MATKA**  
MT-022 Saffron



**FEDORA 621-046**  
**GATSBY WC978-046**  
Light Grey



**MATKA**  
MT-036 Titanium



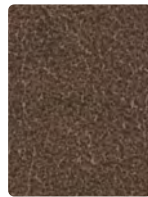
**GALVESTON**  
GV-026 Stucco



**MATKA**  
MT-000 Shiitake



**FEDORA 621-000**  
**GATSBY WC978-000**  
Mink



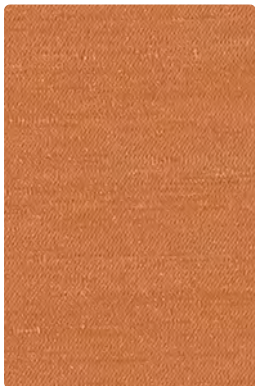
**GALVESTON**  
GV-010 Cedar



**MARMARA**  
625-002 Topaz



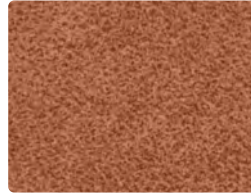
**EPHESUS**  
623-002 Topaz



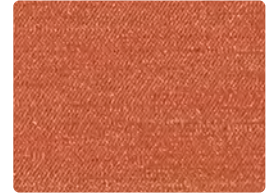
**MATKA**  
MT-019 Sepia



**VECTOR**  
VE-000 Dark Copper



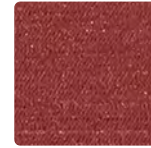
**GALVESTON**  
GV-009 Sunset



**MATKA**  
MT-009 Harvest



**FEDORA 621-009**  
**GATSBY WC978-009**  
Persimmon



**MATKA**  
MT-011 Wine



**GALVESTON**  
GV-001 Russet



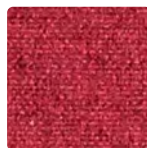
**MARMARA**  
625-001 Garnet



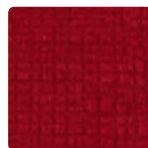
**ODESSA**  
624-001 Ruby



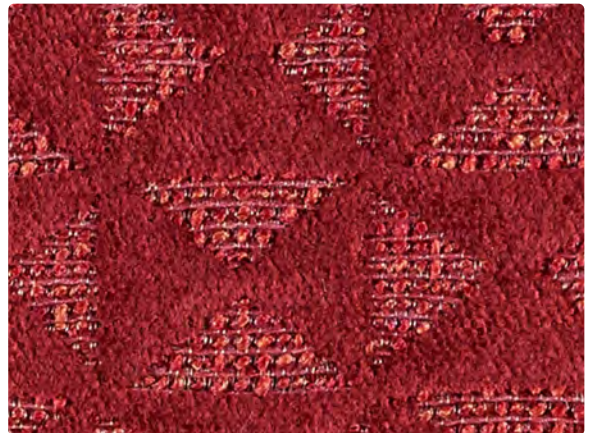
**MATKA**  
MT-001 Cherry



**FEDORA 621-001**  
**GATSBY WC978-001**  
Ruby



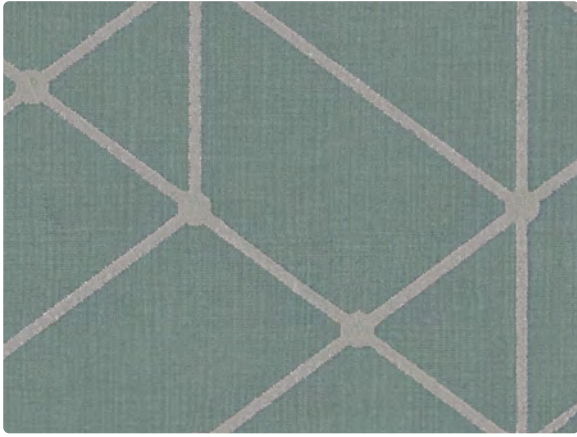
**ENGRAVE**  
634-001 Scarlet



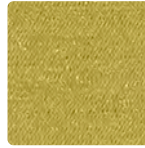
**EPHESUS**  
623-001 Garnet

Additional colors are available. Please refer to the Mayer Fabrics website.

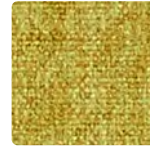




**VECTOR**  
VE-003 Mint



**MATKA**  
MT-013 Spring



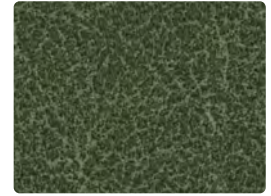
**FEDORA 621-013**  
**GATSBY WC978-013**  
Citron



**MARMARA**  
625-013 Grass



**EPHESUS**  
623-003 Laurel



**GALVESTON**  
GV-023 Hunter



**FEDORA 621-056**  
**GATSBY WC978-056**  
Dew



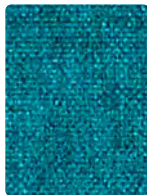
**ENGRAVE**  
634-033 Tourmaline



**GALVESTON**  
GV-033 Agave



**ODESSA**  
624-014 Turquoise



**FEDORA 621-053**  
**GATSBY WC978-053**  
Aegean



**MATKA**  
MT-014 Cerulean



**ODESSA**  
624-004 Indigo



**EPHESUS**  
623-004 Indigo



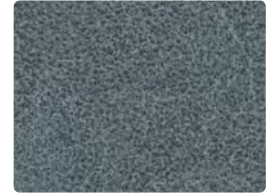
**EPHESUS**  
623-016 Metal



**MARMARA**  
625-016 Metal



**VECTOR**  
VE-004 Haze



**GALVESTON**  
GV-014 Stream



**MATKA**  
MT-004 Lapis



**FEDORA 621-014**  
**GATSBY WC978-014**  
Indigo



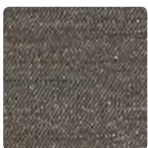
**ENGRAVE**  
634-004 Indigo



**ENGRAVE**  
634-016 Pewter



**ODESSA**  
624-006 Gravel



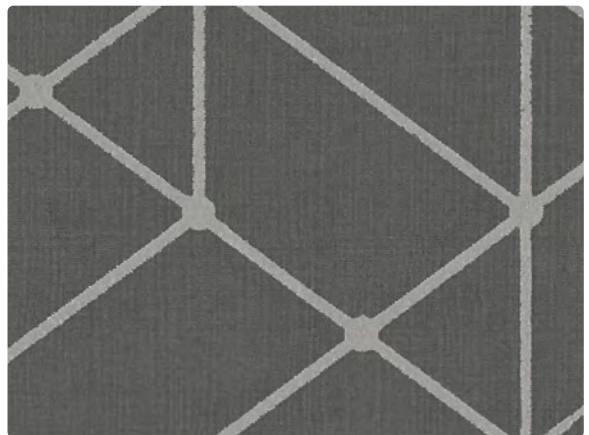
**MATKA**  
MT-016 Shadow



**GALVESTON**  
GV-016 Winchester



**FEDORA 621-006**  
**GATSBY WC978-006**  
Bitumen



**VECTOR**  
VE-016 Iron

Additional colors are available. Please refer to the Mayer Fabrics website.

# TECHNICAL INFORMATION

Curated Collection | Interactive Card

Pattern 54"	Content and Backing	Certifications	Weight/ Linear Yd.	Pattern Repeat	Finish	Abrasion Wyzenbeek	Light-Fastness	Flammability	Cleaning Code
<b>ENGRAVE</b> <i>Directional</i>	100% Polyester Backing: Polyester	GREENGUARD Gold	15.68 oz.	None	Nanotex®	100,000 <sup>A</sup> Double Rubs	40 hours	Cal. 117-2013 NFPA 260/UFAC Class 1	W
<b>EPHESUS</b> <i>Directional</i>	61% Polyester, 30% Acrylic, 9% Viscose Backing: Acrylic	GREENGUARD Gold, OEKO-TEX® Certified	25.08 oz.	14.17" H, 11.81" V Random Match	Stain Repellent - PFOA Free	145,000 <sup>A</sup> Double Rubs	40 hours	Cal. 117-2013 NFPA 260/UFAC Class 1	WS
<b>FEDORA</b> <i>Directional</i> <i>Multi-use*</i>	100% Polyester Backing: Polyester	GREENGUARD Gold	17.2 oz.	None	Stain Repellent - PFOA Free	100,000 <sup>A</sup> Double Rubs	40 hours	Cal. 117-2013 NFPA 260/UFAC Class 1 ASTM E84 (Unadhered) Class 1 or A	W
<b>GALVESTON</b>	80% Vinyl - Phthalate Free face, 20% Polyester backing	GREENGUARD	30 oz.	None	Soil & Stain Resistant Top Coat with Ink Resistant Technology	250,000 <sup>A</sup> Double Rubs	200 hours	Cal. 117-2013 NFPA 260/UFAC Class 1 FMVSS 302	BC, CFC
<b>GATSBY</b> <i>Directional</i>	100% Polyester Backing: Crypton®	GREENGUARD Gold	24.3 oz.	None	Crypton® with Antimicrobial Silver Ion Technology	100,000 <sup>A</sup> Double Rubs	40 hours	Cal. 117-2013 NFPA 260/UFAC Class 1	C, BC
<b>MARMARA</b> <i>Directional</i>	59% Polyester, 35% Acrylic, 6% Viscose Backing: Acrylic	GREENGUARD Gold, OEKO-TEX® Certified	20.11 oz.	14.2" H, 8.4" V Non-Matching	Stain Repellent - PFOA Free	150,000 <sup>A</sup> Double Rubs	40 hours	Cal. 117-2013 NFPA 260/UFAC Class 1	WS
<b>MATKA</b> <i>Directional</i>	80% Vinyl - Phthalate Free face, 20% Polyester backing	GREENGUARD	30 oz.	Non-Matching	Soil & Stain Resistant Top Coat with Ink Resistant Technology	250,000 <sup>A</sup> Double Rubs	500 hours	Cal. 117-2013 NFPA 260/UFAC Class 1	WS, BC, CFC
<b>ODESSA</b> <i>Directional</i>	64% Acrylic, 36% Polyester Backing: Acrylic	GREENGUARD Gold, OEKO-TEX® Certified	25.4 oz.	13.8" H, 20.9" V Non-Matching	Stain Repellent - PFOA Free	50,000 <sup>A</sup> Double Rubs	40 hours	Cal. 117-2013 NFPA 260/UFAC Class 1	WS
<b>VECTOR</b> <i>Directional</i>	40% Polyurethane Polycarbonate - PVC Free face, 60% Polyester backing	GREENGUARD	16 oz.	20.25" H, 10.25" V	WRITE AWAY® - Soil & Stain Resistant Top Coat with Ink Resistant Technology	100,000 <sup>A</sup> Double Rubs	200 hours	Cal. 117-2013 NFPA 260/UFAC Class 1 IMO A.652(16) 8.2	WS, BC, CFC

## REDUCED ENVIRONMENTAL IMPACT

These products are GREENGUARD Certified or GREENGUARD Gold Certified for low chemical and particle emissions to UL standard UL 2818 and may contribute to LEED certification.

No FR Additives

**Fedora, Galveston, Matka**  
Antimicrobial/Antibacterial Additives

**Vector**  
Antimicrobial Additives

**Ephesus, Marmara, Odessa**  
OEKO-TEX® Certified

## CARE AND CLEANING INFORMATION

W: Water-Based Cleaner

WS: Water/Solvent Cleaner

C: Crypton Cleaning

CFC: Coated Fabrics Cleaning – Refer to Mayer website for complete cleaning info.

BC: Bleach Cleanable – 1 part bleach, 9 parts water = 10% bleach, 90% water solution. **Do not clean/disinfect fabric for longer than 10 minutes using the 10% bleach solution. Always rinse promptly with clean water after applying the bleach solution. Failure to do so will void any and all warranties.**

## DYE TRANSFER DISCLAIMER

Certain clothing and accessory dyes (such as those used on denim jeans) may migrate to lighter colors. This phenomenon is increased by humidity and temperature and is irreversible. Mayer Fabrics will not assume responsibility for dye transfer caused by external contaminants. Please check compatibility when using this product in combination with painted or varnished surfaces.

## ADDITIONAL INFORMATION

<sup>A</sup>Abrasion test results exceeding ACT Performance Guidelines are not an indicator of product lifespan. Multiple factors affect fabric durability and appearance retention.

<sup>+</sup>A multi-use fabric that can be used for upholstery, panels, wrapped walls, and acoustic.

Warranty: Please refer to the Mayer website for warranty information by pattern.

Custom Colors: All patterns can be custom colored. Minimum yardage applies.

Digital Swatch Card Color Matching: Due to color variations on different monitors and color printers, actual swatch colors may vary slightly. Please request a memo sample from Mayer Fabrics to ensure proper color representation.

Complete and current product information available at [mayerfabrics.com](http://mayerfabrics.com).



These fabrics meet or exceed these ACT performance guidelines.  
\*Certification Marks owned by ACT\*

**Ephesus, Fedora, Marmara, Odessa**



Water and Stain Repellent Finish

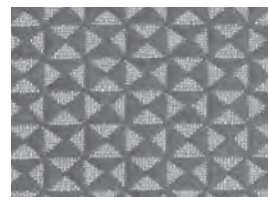
**Gatsby**



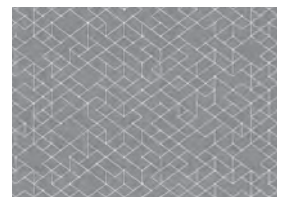
©2021  
ACCCCD 51121

**Fedora**

This 100% polyester fabric is included in the Underwriter's Laboratory Fabric Recognition Program. Additional testing of this U.L. recognized component is not required on approved panels from participating manufacturers.



EPHESUS –  
Repeat: 14.17" H, 11.81" V  
Random Match



VECTOR –  
Repeat: 20.25" H, 10.25" V

Representation by

**CB | 15**  
FURNITURE+  
**ARNOLD**  
COLLECTIVE

**MAYER FABRICS**

130 Coit Street  
Irvington, NJ 07111  
T 844.307.1832  
[www.cb15furniture.com](http://www.cb15furniture.com)

200 Lexington Avenue  
New York Design Center, Suite 1315  
New York, NY 10016  
T 202.202.9640

T 800.428.4415 [mayerfabrics.com](http://mayerfabrics.com)  
500 S. Kitley Ave. Indianapolis, IN 46219